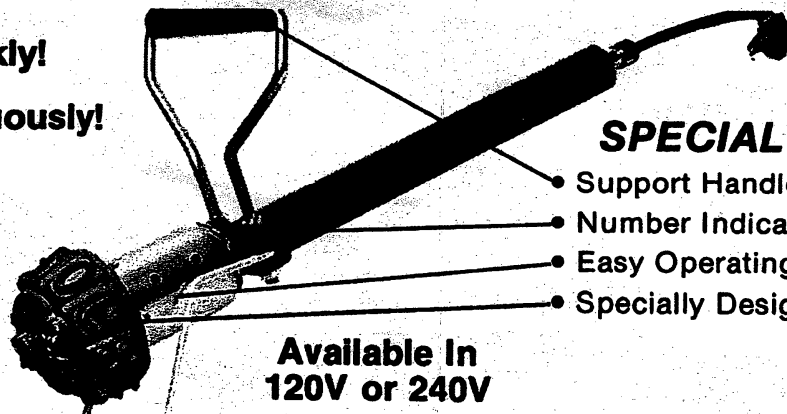


# "THE ELRICK No. 32A BRANDER"

## Instructions and Parts List

**Heats Quickly!**  
**Brands Continuously!**

**Face of Branding  
Head Holds  
Insertable Letters**



### SPECIAL FEATURES

- Support Handle
- Number Indicator & Dial
- Easy Operating Stand
- Specially Designed Heating System

**Available In  
120V or 240V**

The Elrick Brander was designed with the operator in mind. Its special features are unique and make it an easier, faster tool to use and simplify the branding operation.

### Instructions

The Elrick Brander is constructed for efficient branding of changing numbers. The tool is to be held with one hand on the support handle and the other on the grip handle. Rotate the tool to the desired branding number. Selection and positioning of the desired branding numbers is made easy with the number indicator and dial. If the number indicator is pointing directly at the number on the dial, you can be certain that the face of that branding number is positioned toward the tire surface. The number is then branded by simply pressing down using the support handle.

If only one number of a series changes, hold the unchanging numbers on the face of the branding head and apply the last number individually. Chalk marks can be used as placement guides to keep numbers evenly spaced and in line.

The 2 1/4" Diam. face of the branding head will accommodate individual letters or numbers that slide into place, or personalized branding plates

which also slide into place.

The tool can also be held as demonstrated in Photo #2 with both hands on the grip and the tire being branded while in the standing position. When the tool is held in this manner, the support handle will automatically swing down and away from any interference with the branding operation. This way of using the brander allows the operator to see the number he is branding because he is branding with the numbers facing to the side rather than down. Different numbers for branding can be selected simply by rotating the wood grip in your hands. If branding is done most often in this fashion it may be convenient to remove the support handle.

**NOTE:** After branding, numbers may be cleaned with a soft wire brush. Residue from branding can act as an insulator slowing the branding process.



Photo #1

**CAUTION! Do not place hot brander on or near any flammable material.**

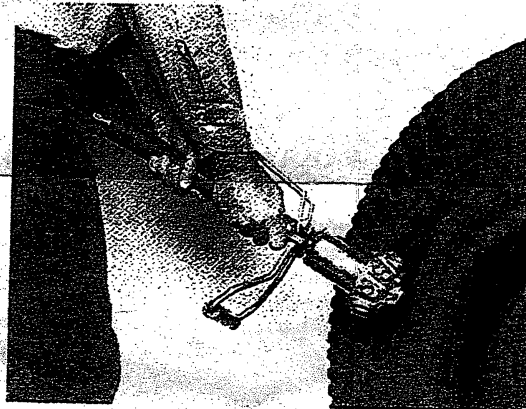


Photo #2

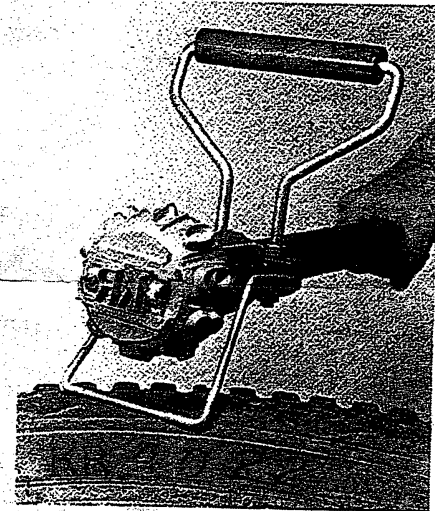


Photo #3

Insertable Letter



Front



Side

Insertable Plate

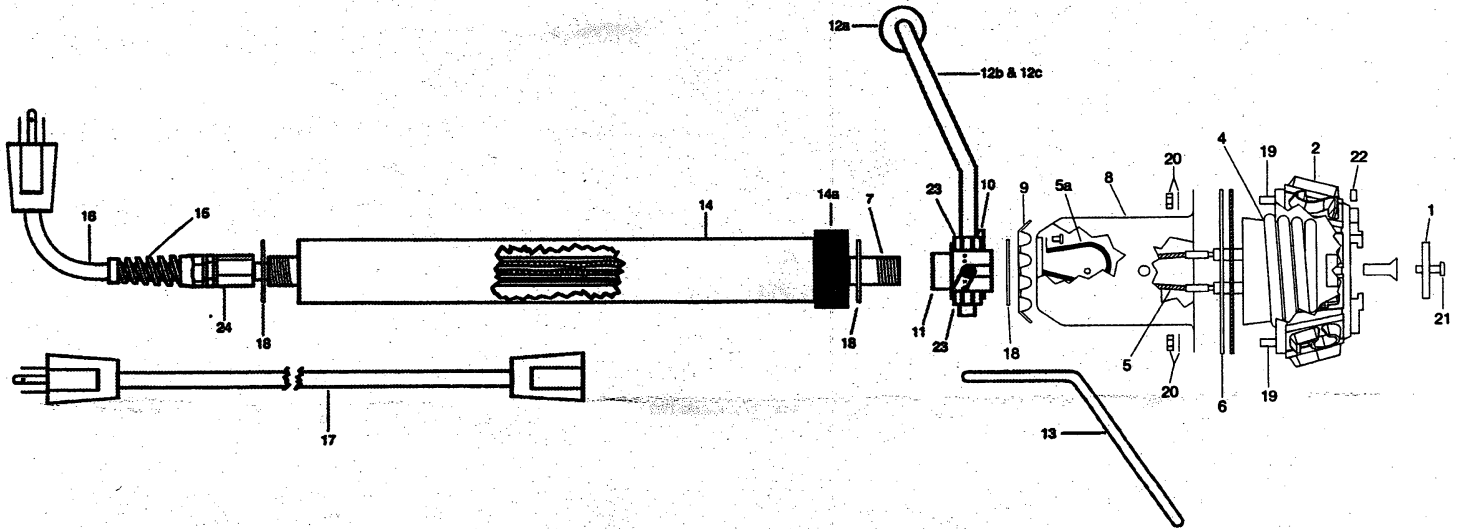


Front



Side

# "THE ELRICK #32A BRANDER" Parts Drawing



NOTE: When ordering parts, state model number of tool, and then the part number (For example, #32A-2 designates the branding head)

## Parts List

- |                                                                                                 |                               |                            |
|-------------------------------------------------------------------------------------------------|-------------------------------|----------------------------|
| 1) Stop Spacer                                                                                  | 9) Dial                       | 15) Strain Relief Assembly |
| 2) Branding Head (Includes Gasket & Nuts)                                                       | 10) Indicator Bushing         | 16) Electric Cord Assembly |
| 4) Heater Replacement Kit (Includes Gasket, Heater Assembly, Head Nuts/Washers, & Instructions) | 11) Inner Bushing             | 17) 10' Extension Cord     |
| 5) Heater Wires                                                                                 | 12) Support Handle (Complete) | 18) 1 1/2" Washer          |
| 5a) Ground Wire                                                                                 | 12a) Wood Handle              | 19) Head Stud              |
| 6) Gasket                                                                                       | 12b) Wire - R                 | 20) Head Nut w/ Washer     |
| 7) Pipe                                                                                         | 12c) Wire - L                 | 21) Screw/Stop Spacer      |
| 8) Case Housing Assembly (Includes Dial)                                                        | 13) Wire Stand                | 22) Slot Screw             |
|                                                                                                 | 14) Wood Grip Handle          | 23) Nut/Support Handle     |
|                                                                                                 | 14c) Handle Guard             | 24) Coupling Nut           |

## WARRANTY

Elrick Industries warrants that this tool has been carefully inspected and that it will be free from defects in material and workmanship under normal use and service for a period of (90) days from date of purchase. This warranty applies to the purchaser of the tool for original use only. All other warranties whether expressed or implied, including any warranties for merchantability of fitness for purpose are hereby excluded. Should this tool fail to meet the warranty during this ninety (90) day period, promptly return it to the place of purchase freight prepaid. Elrick will replace free of charge any part or parts found by us to be defected due to faulty material or workmanship, provided repairs have not been made or attempted by others.

The Elrick Brander is constructed to hold up under everyday use, and will give the user long efficient service. Be careful to use the correct voltage the tool was designed for. Incorrect voltage may cause the heater to fail. Avoid leaving the tool plugged in for long periods of time without use because it is possible to build up an excess of heat.

## IMPORTANT WARRANTY NOTE!

The electrical cord used in the 32A Brander is made of a special flexible, heavy duty industrial grade cable designed to give many years of service. However, excessive flexing or twisting may damage the cable. When branding, never place your hand or body against the cord and strain relief. Check regularly to make sure the cord is not twisted due to tool rotation and correct if necessary. **DAMAGED CORDS ARE NOT COVERED UNDER WARRANTY!**

## INSTRUCTIONS FOR ASSEMBLY OF SUPPORT HANDLE

Note: Use schematic drawing on enclosed Instruction and Parts list as a guide.

1. Insert unthreaded ends of the wire support right and wire support left into opposite ends of handle.
2. Remove one nut from the end of each wire support. Being sure that the handle bend in wire supports is angling away from the branding head, insert threaded end of wire supports into the 2 holes in the indicator bushing. The nuts left on the wire supports will act as stops.
3. The threaded ends will project through the indicator bushing. Place the 2 remaining hex nuts on these ends and tighten. Hold the "support handle assembly" in position to prevent it from cocking while tightening the hex nuts.